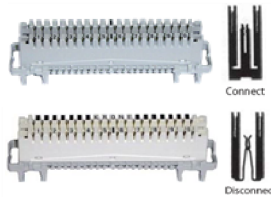


# KRONE and R&M Connection Module



## Series 2 Connection Module 2/10 (1-0), Profil

LSA-Profil Connection Module 2/10

## Series 2 Disconnection Module 2/10 (1-0), Profil

LSA-Profil Disconnection Module 2/10



## Series 2 Arrestor Magazine for 3-pole 10 arresters

1. 3-pole Magazine 2/10, for 10, 3-pole arresters
2. 3-pole Magazine 2/10, for arresters, Loaded w/230V arresters

## 3-pole Arresters 230V-5A/5KA with fail-saft "Sankosha"



## Hinged Label Holder

Hinged Label Holder 2/10, with label  
Hinged Label Holder 2/8

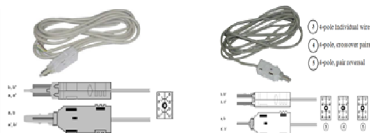
## Label Holder, Back-mount

Label Holder 2/10 size I, 15 mm. w label  
Label Holder 2/8 size I



## Connection Tool with Sensor

LSA-PLUS Insertion Cutting Tool



## Series 2 Test Cord, 2 pole open Ended

2-pole plug 2/2, with cord 1.5M.

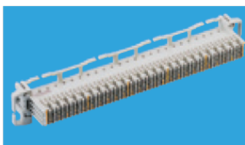
## Series 2 Test Cord, 4 pole open Ended

4-pole plug 2/4, with cord 1.5M.



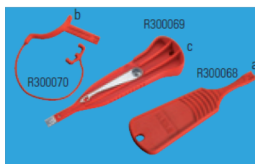
## Disconnection Module , 16 paire

Grid size = 20 mm  
VS Compact module, printed,  
Installation instructions  
Mini-tool (wiring tool)



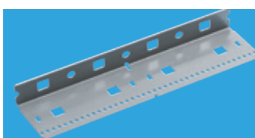
## Disconnection Module , 25 paire

Grid size = 25 mm  
VS Compact module, printed,  
Installation instructions  
Mini-tool (wiring tool)



## Wiring Tool

- a. Mini Tool
- b. Micro Tool
- c. Comfort Tool



## Mounting Profiles

Depth 25 mm Length 1000 mm  
Depth 50 mm Length 1000 mm



## KRONE Indoor Distribution Steel Cabinet

Box wall mount for 1×6 pos.(HWD 30×25×13cm) 50 pair  
 Box wall mount for 1×11 pos.(HWD 42×25×13cm) 100 pair  
 Box wall mount for 2×11 pos.(HWD 42×45×13cm) 200 pair  
 Box wall mount for 3×11 pos.(HWD 42×65×13cm) 300 pair  
 Box wall mount for 2×22 pos.(HWD 70×45×15cm) 400 pair  
 Box wall mount for 3×22 pos.(HWD 70×65×15cm) 600 pair  
 Box wall mount for 4×22 pos.(HWD 70×85×15cm) 800 pair  
 Box wall mount for 1×27 pos.(HWD 85×30×15cm) 250 pair  
 Box wall mount for 2×27 pos.(HWD 85×50×15cm) 500 pair  
 Box wall mount for 3×27 pos.(HWD 85×70×15cm) 750 pair  
 Box wall mount for 4×27 pos.(HWD 85×90×15cm) 1,000 pair  
 Box wall mount for 2×33 pos.(HWD 105×60×15cm) 600 pair  
 Box wall mount for 3×33 pos.(HWD 105×85×15cm) 900 pair  
 Box wall mount for 4×33 pos.(HWD 105×110×15cm) 1,200 pair  
 Box wall mount for 5×33 pos.(HWD 105×135×15cm) 1,500 pair



Box floor-mount for 2×55 pos. BMF(HWD 190×70×40cm) 1 door 1,000 pairs  
 Box floor-mount for 3×55 pos. BMF(HWD 190×94×40cm) 1 door 1,500 pairs  
 Box floor-mount for 4×55 pos. BMF(HWD 190×118×40cm) 2 door 2,000 pairs  
 Box floor-mount for 5×55 pos. BMF(HWD 190×142×40cm) 2 door 2,500 pairs  
 Box floor-mount for 6×55 pos. BMF(HWD 190×166×40cm) 2 door 3,000 pairs  
 Box floor-mount for 7×55 pos. BMF(HWD 190×190×40cm) 2 door 3,500 pairs  
 Box floor-mount for 8×55 pos. BMF(HWD 190×214×40cm) 4 door 4,000 pairs  
 Box floor-mount for 9×55 pos. BMF(HWD 190×238×40cm) 4 door 4,500 pairs  
 Box floor-mount for 10×55 pos. BMF(HWD 190×262×40cm) 4 door 5,000 pairs



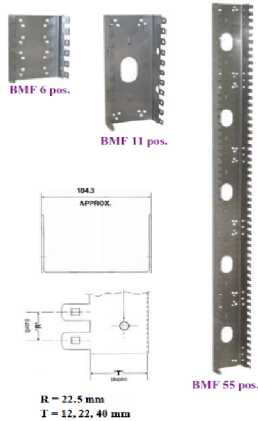
## Distribution Frame 108A, Dual Vertical Rack

Distribution Frame 108A, Dual for 1,400 pairs Profil Rod Type  
 Distribution Frame 108A, Single for 700 pairs Profil Rod Type  
 Front Panel Cover Distribution Frame 108A for 700 pairs  
 Side Panel Cover Distribution Frame 108A for 700 pairs  
 Back To Back Cable Management kit for 108A Dual Frame  
 Back To Back Cable Management kit for 108A Single Frame



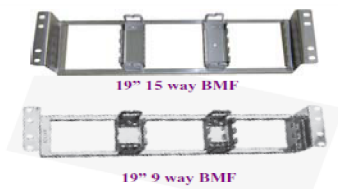
## Backmount Frame Set

Back-mount Frame set 55 pos.  
 Jumper Ring Bar for 55 pos.



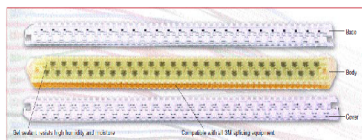
## Backmount Frame

Back-mount Frame 1 pos. deep 12 mm.  
 Back-mount Frame 2 pos. deep 22 mm.  
 Back-mount Frame 3 pos. deep 22 mm.  
 Back-mount Frame 6 pos. deep 22 mm.  
 Back-mount Frame 11 pos. deep 22 mm.  
 Back-mount Frame 11 pos. deep 40 mm.  
 Back-mount Frame 22 pos. deep 40 mm.  
 Back-mount Frame 33 pos. deep 40 mm.  
 Back-mount Frame 44 pos. deep 40 mm.  
 Back-mount Frame 55 pos. deep 40 mm.  
 Back-mount Frame 11 pos. deep 40 mm. for module 2/8



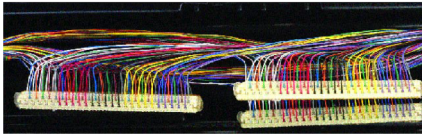
## 19" Backmount Frame, recessed

19" BMF 15 way Recessed  
 19" BMF 9 way Recessed



## 4000G/TR Super-Mini Splicing Module

The 4000-G/TR connector module accepts a large variety of insulation and conductor diameters : 22-28 AWG (0.63mm - 0.32mm) The small size of the 4000G/TR connector module allows splice bundles to be smaller, improving housekeeping and reducing the costs associated with larger diameter closures



## Splicing Head Wire (3M)

3M™ MS™ Splicing Rig Wire Guide Kit is designed for use with 3M  
 - White (with All Colour)  
 - Blue

